



## Oil Temperature Controllers e.THERM Type O210

*New!  
size L*



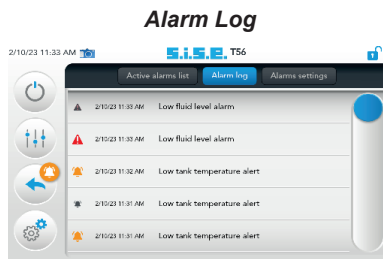
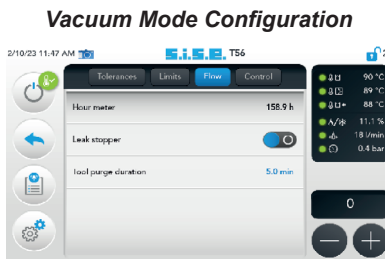
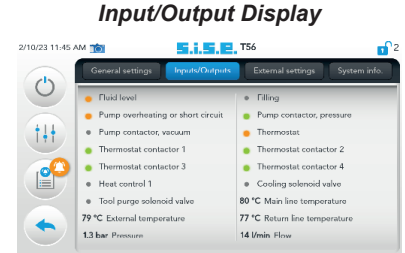
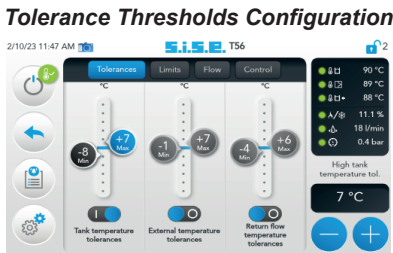
Touch screen

**The new generation of e.Therm oil temperature controllers features a robust 7" anti-shock color touchscreen. The vibrant interface is highly intuitive and user-friendly.**

**It offers easily upgradeable options, such as communication packs. The unit comes with standard remote viewing via VNC.**

**This new range of devices offers a wide selection with heating capacities up to 21 kW and an operating temperature range up to 250°C. The hydraulic design and welded mechanical construction allow easy access to the heating elements without draining or handling. Standard features such as pressure measurement with display of pressure value, calculated flow and the expansion tank provide additional operational safety in process**

### EXAMPLE SCREEN DISPLAYS :



### O210 M 6-9-12

- 3 units are available with heating capacities of 6, 9, and 12 kW. The operating temperature range can extend from 210°C to 250°C (optional). All are equipped with magnetic-coupled peripheral pumps with a flow rate of 60 L/min, ensuring long service life. The boiler design eliminates the need for draining during maintenance. An optional 3-way valve helps prevent scaling of the heat exchanger. The inclusion of solid-state relays and standard pressure measurement provides high precision in regulation and monitoring. **2 year Warranty.**



### O210 L 9-12-18-24

- These higher-power heating units are also equipped with a stainless steel magnetic-coupled peripheral pump with a flow rate of 100 L/min. They cover a wide range of industrial applications such as extrusion, calendering, injection molding, and certain custom specifications upon request. Highly robust, they feature state-of-the-art components. They also meet market demands with features like a large-capacity expansion tank (42 L), significant cooling capacity (160 kW), and a low surface load per cm<sup>2</sup> on their heating elements. **2 year Warranty.**

## TECHNICAL FEATURES OIL TEMPERATURE CONTROLLER

MODEL	O210 - M6	O210 - M9	O210 - M12	O210 - L9	O210 - L12	O210 - L18	O210 - L24
Fluid	Oil						
Maximum Temperature °C	210						
Heating Capacity (kW)	6	9	12	9	12	18	21
7" Anti-shock color touch screen	Standard						
Heating Stages	1						
Pump Type	Peripheral pump – Magnetic coupling						
Maximum Flow L/Min	60			100			
Maximum Pressure (bar)	6			8			
Cooling Technology	Spiral plate heat exchanger						
Cooling Power (kW) (Water 10°C - Maximum Process Temperature)	50			160			
Filling	Manuel						
Filling Volume (L)	13			14			
Expansion Volume (L)	6			42			
Control and Regulation	Type PI MicroP - Self-Tuning						
Voltage	400V - 3 Ph. + T - 50 Hz						
Dimensions (mm) : Profondeur Largeur Hauteur	L859 x W328 x H583			L1104x W454 x H974			
Weight kg (empty)	≈ 75 kg			≈ 105 kg			

## OPTIONS

MODEL	O210 - M6	O210 - M9	O210 - M12	O210 - L9	O210 - L12	O210 - L18	O210 - L24
-------	-----------	-----------	------------	-----------	------------	------------	------------

### PROCESS

Mold cooling mode before stop	●	●	●	●	●	●	●
Operating range monitoring (Thresholds)	●	●	●	●	●	●	●
Solid State Relays	●	●	●	●	●	●	●
Pressure gauge	●	●	●	●	●	●	●
MECHATRONIC flowmeter (180°C)	○	○	○	○	○	○	○
3-way valve "anti-scaling system"	○	○	○	○	○	○	○
Manual / Automatic By-Pass (210°C)	○	○	○	○	○	○	○
(Air Pressure) Mold Cleaning	○	○	○	○	○	○	○
Programmable heatings (ramps / per stages)	○	○	○	○	○	○	○
Option 250°C	○	○	○	○	○	○	○

### COMMUNICATION

VNC Connection	●	●	●	●	●	●	●
Remote Alarm	○	○	○	○	○	○	○
Remote Set Point & Copy Process T°C - ON/OFF control	○	○	○	○	○	○	○
COM E82.1 / TTY / RS485 / SPI / Modbus / Profinet,...	○	○	○	○	○	○	○
Package COM 1 (E82.1 + TTY)	○	○	○	○	○	○	○
Package COM 2 (E82.1 + RS485)	○	○	○	○	○	○	○
Package COM 3 (E82.1 + SPI)	○	○	○	○	○	○	○
Package COM 4 (SPI + E82.1 + RS485)	○	○	○	○	○	○	○
Package COM 5 (SPI + E82.1 + TTY)	○	○	○	○	○	○	○

### AUXILIARY EQUIPMENT

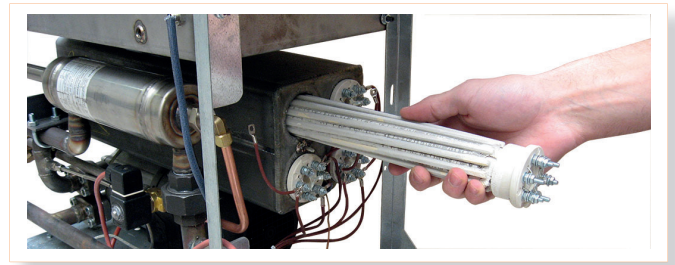
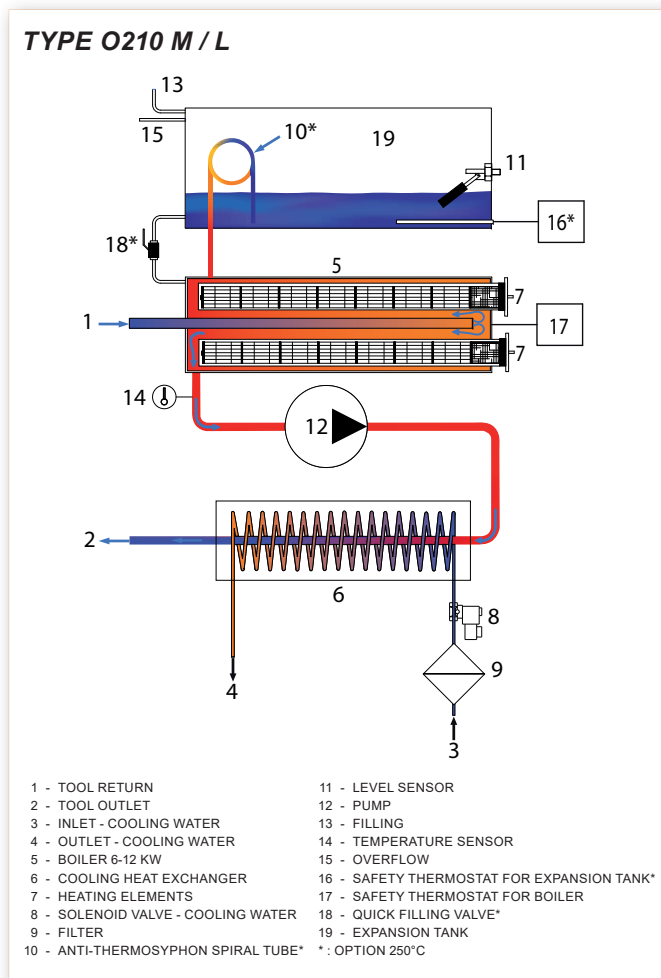
Manifold Multi - Inlets / Outlets (210°C ou 250°C)	○	○	○	○	○	○	○
Flange connection	○	○	○	○	○	○	○
LED Alarm Tower	○	○	○	○	○	○	○

### VARIOUS

Time, date, hour counter display	○	○	○	○	○	○	○
Special lateral door color	○	○	○	○	○	○	○
230V/440V/480V - 3Ph. + T - 60Hz	○	○	○	○	○	○	○

● = standard ○ = option (Specific projects upon request...)

## HYDRAULIC CIRCUIT :

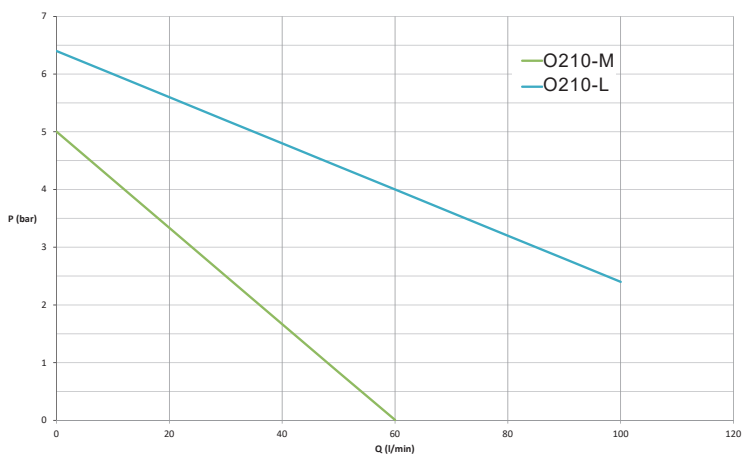


The horizontal boilers model O210 have the ability to change the heating elements without draining the circuit. The low load density per cm<sup>2</sup> of elements reduces oil cracking problems and limits purges, all for an optimized investment.

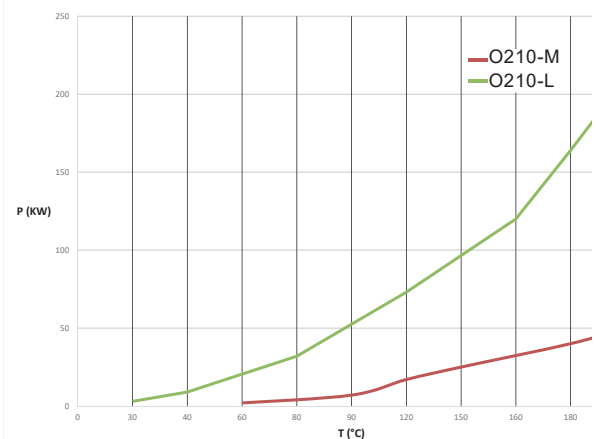


"Anti-scaling" system

## PUMP PERFORMANCE :



## COOLING CAPACITY :



**SISE regularly participates in training, start-up assistance, or support for existing installations.**