



## **Water Temperature Controllers e.THERM Type W90**



**The new generation of e.THERM atmospheric water temperature controllers 90°C(200°F) is available with either the advanced 7" anti-shock color touch screen or with the more economical 3" backlit screen option.**

**The 7" color interface is highly intuitive. Standardized across the entire range, it includes easily upgradable options such as the communication option. We supply our unit with a standard remote viewing option that uses VNC communication.**

**All technical components of this new generation are easily accessible and replaceable for easy maintenance.**

**Storage and graphical display of process data, energy consumption calculation, enhanced instrumentation, event history, provide process traceability and data transmission. This is also possible thanks to the open communication protocol OPC-UA. Fully in line with SISE 4.0 strategy.**

### DISPLAY DETAILS SCREEN 7" SCREEN

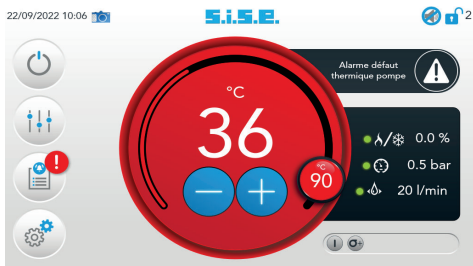
**Simplified home display (standard version)**



**Detailed home display with Flow Option**



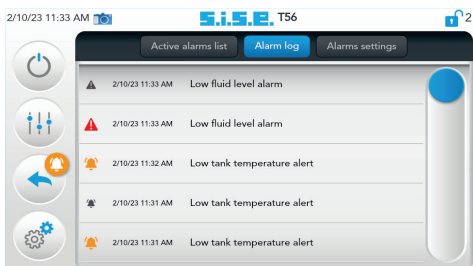
**Alarms**



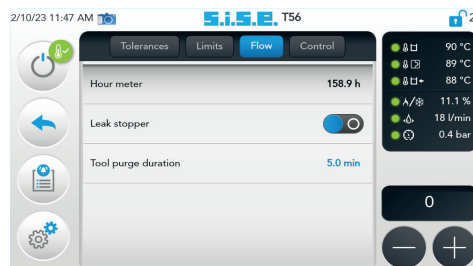
**Alerts**



**Alarm / Alert Log**



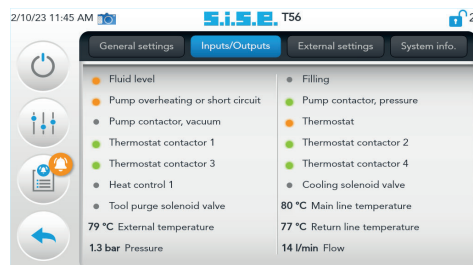
**Vacuum Mode Configuration**



**Tolerance Thresholds Configuration**

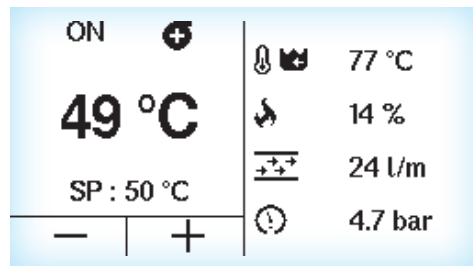
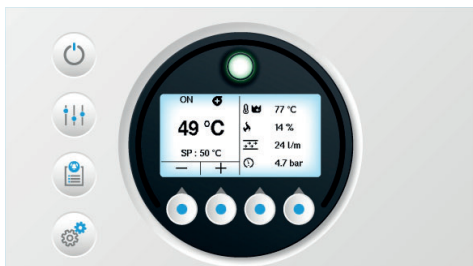


**Input/Output Display**

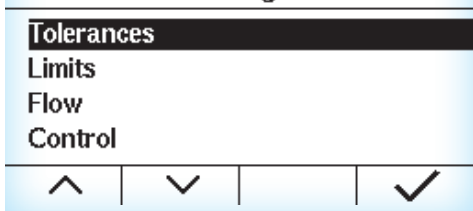


### DISPLAY DETAILS 3" SCREEN (optional)

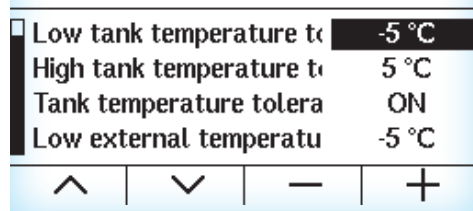
**Home display**



**Settings**



**Tolerances**



## TECHNICAL FEATURES WATER TEMPERATURE CONTROLLER


MODEL	W90 - S6/9			W90 M6/9/12/15/18					W90 L9/18/27/36/45				
Maximum Temperature °C	90												
Heating Capacity (kW)	6	9	6	9	12	15	18	9	18	27	36	45	
Heating Stages	1		1					1		2		3	
Pump Type	Peripheral submersible		Peripheral submersible					Peripheral/Centrifugal submersible					
Maximum Flow L/Min	60		60 ou 70					130* / 140 - 200 - 400					
Maximum Pressure (bar)	3,5		3,5 ou 6					5,2* / 5,3 - 7,2 - 4,5					
Cooling Technology	Coil		Coil					Heat Plate exchanger 60 kW					
Cooling Power (kW) (Water 10°C - Maximum Process Temperature)	25		30					60					
Suction/ Anti-Leak function	Yes		Yes					OK for pump 200 L/Min*					
Filling	Auto												
Filling Volume (L)	8,2		15,5					34					
Expansion Volume (L)	2,2		7,4					10					
Process inlet / outlet	¾"		¾"					1"¼					
7" Anti-shock color touch screen	Standard												
3" Screen with membrane keyboard	Option							-					
Control and Regulation	MicroP - Self-Tuning												
Voltage	400V - 3Ph. + T - 50Hz												
Dimensions (mm) :													
Depth	542		811					1150					
Width	270		328					446					
Height	498		540					976					
Weight kg (empty)	≈ 26		≈ 53					From 110 to 150 kg depending on pump size					

\* Peripheral submersible pump 200L (130L operating point)

## STANDARDS / OPTIONS

MODEL	W90 - S6/9	W90 M6/9/12/15/18	W90 L9/18/27/36/45
-------	------------	-------------------	--------------------

### PROCESS

Mold cooling mode before stop	●	●	●
Operating range monitoring (Thresholds)	●	●	●
Solid State Relays	●	●	●
Pressure/Flow Rate Calculation Informations	●	●	●
VORTEX Flowmeter	○	○	○
Plate heat exchanger (kW)	60	60 or 100	100 or 180
Pseudo-Cascade Control	○	○	○
Manual / Automatic By-Pass	○	○	○
Variable speed drive (EcoFlo Mode) ** 	-	○	○
Manual Filling	-	○	○
(Air Pressure) Mold Cleaning	-	○ (except for 100 kW)	○
Direct cooling	-	○	○

### COMMUNICATION

VNC Connection **	●	●	●
Remote Alarm	○	○	○
Remote Set Point & Copy Process T°C	○	○	○
COM E82.1 or TTY or RS485 or SPI... ***	○	○	○
Package COM 1 (E82.1 + TTY) **	○	○	○
Package COM 2 (E82.1 + RS485) **	○	○	○
Package COM 3 (E82.1 + SPI) **	○	○	○
Package COM 4 (SPI + E82.1 + RS485) **	○	○	○
Package COM 5 (SPI + E82.1 + TTY) **	○	○	○

### AUXILIARY EQUIPMENT

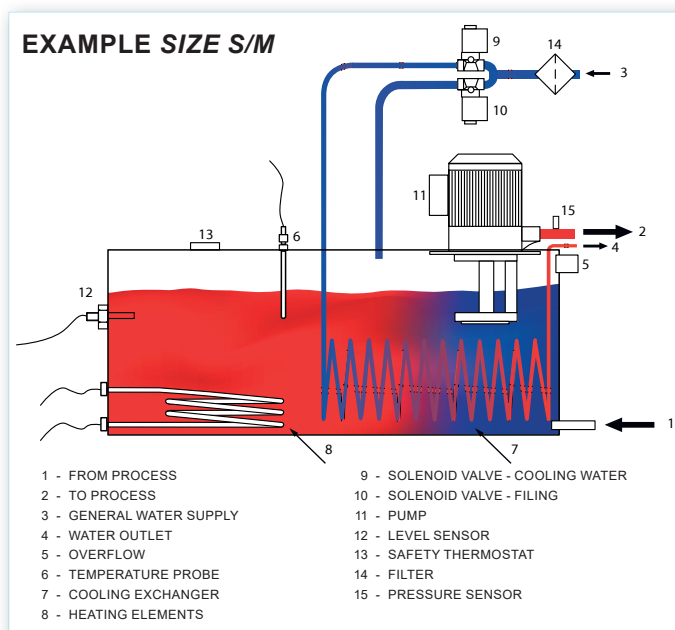
Manifold Multi - Inlets / Outlets	○	○	○
LED Alarm Tower	○	○	○

### VARIOUS

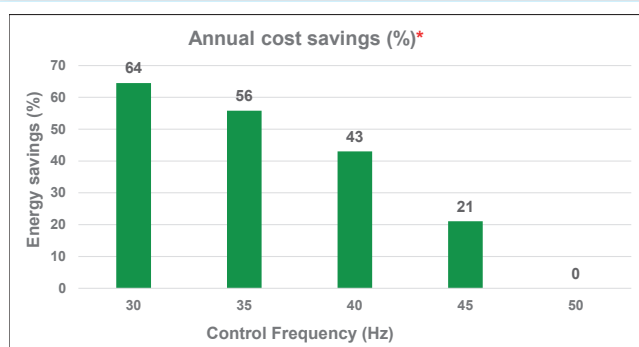
Time, date, hour counter display **	●	●	●
Special lateral door color	○	○	○
230V/440V/480V - 3Ph. + T - 60Hz	○	○	○

● = standard ○ = option - = not available / \*\* = only with 7" / \*\*\* = 3" only RS485 or TTY  
(Specific projects upon request...)

## HYDRAULIC CIRCUIT :



## EcoFlo MODE with variable speed drive :



\* Compared with 50 Hz

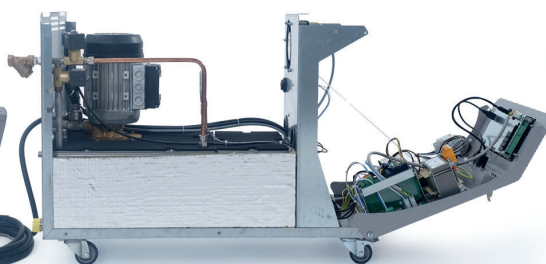
The **EcoFlo** mode offers genuine economic savings.

SISE offers two main operating modes :

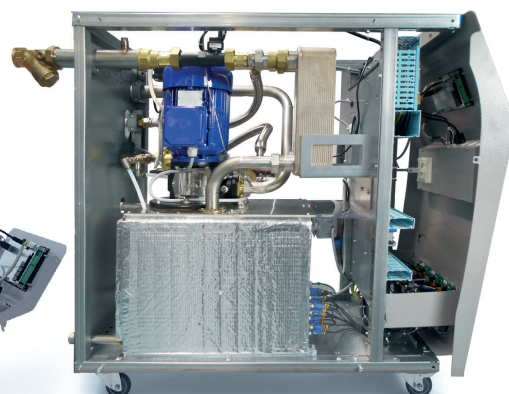
- The manual mode, which sets the pump's rotation speed in %
- The self-adaptive mode, where the pump's rotation speed adjusts automatically.



W90 - S6/9 (Size S)

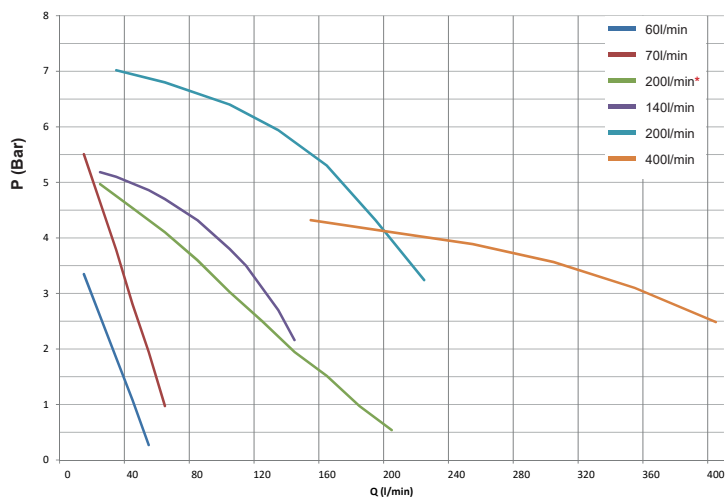


W90 - M6/9/12/15/18 (Size M)



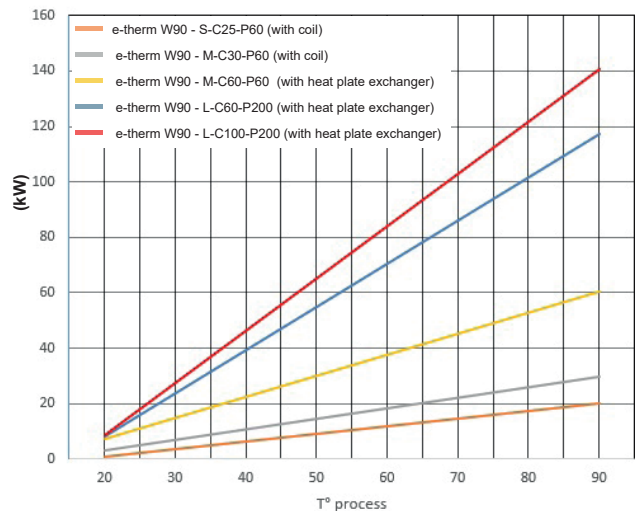
W90 - L9/18/27/36/45 (Size L)

## PUMP PERFORMANCE :



\* Peripheral submersible pump 200L (130L operating point)

## COOLING CAPACITY



Conditions : Water 10°C - Maximum Process Temperature

SISE regularly participates in training, start-up assistance, or support for existing installations.