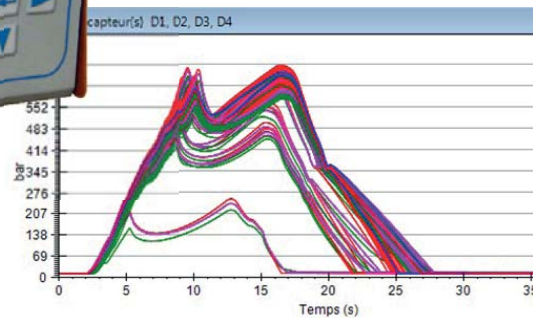
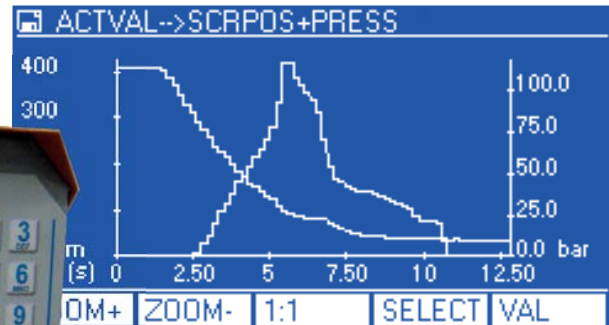


Easy-PSP Data Acquisition System

easy
PSP

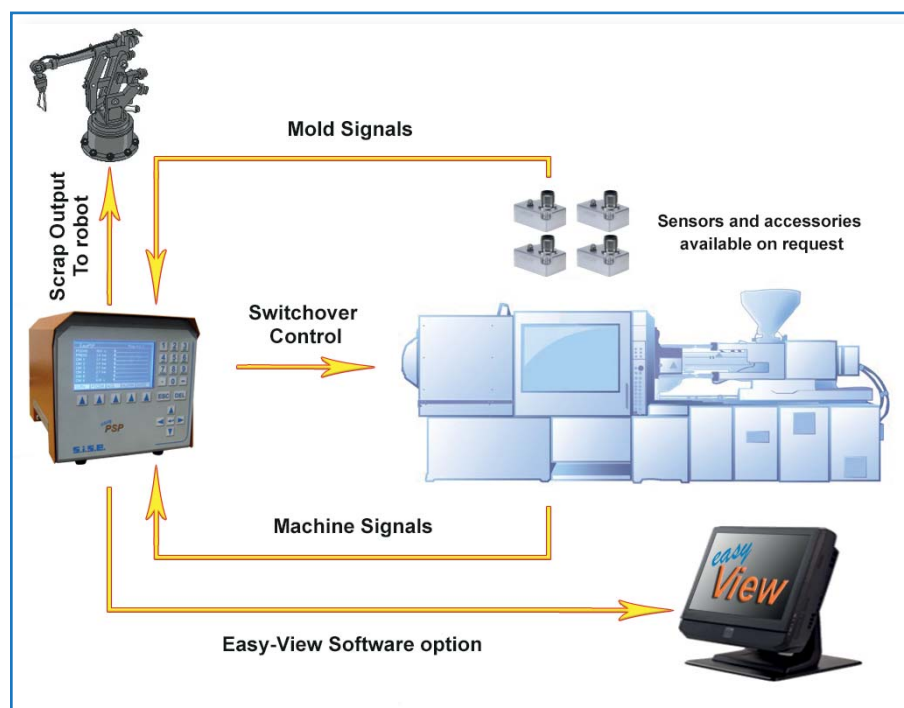


*” Plastics Technology
should be about measurement,
not guesswork...”*

**The new multilingual Easy-PSP Data Acquisition System
is the fruit of all SISE experience
in the domain of management datas
and their traceability in plastics**

DESCRIPTION :

- Compact System with blue LCD screen
- Simple multilingual interface
- 230V single phase power supply
- 8 analog gates 0-10 V of which:
 - ✓ 2 machine inputs (screw position, injection pressure)
 - ✓ 6 free inputs for machine and/or mold, including mold pressure sensor, cavity temperature, thermal flux
- Information by dry contact output toward robot interface
- Switchover Output to press by dry contact
- Log displays the last 500 alarms
- Autonomous system
- Optional "Easy-View" computer software with USB link

**EASY-PSP ADVANTAGE:**

- Training on data collection
- Process confirmation
- Switchover Control by machine and/or mold signals
- Incomplete part detection by direct or indirect mold pressure measurements
- Control and analysis of custom machines in production
- Collect data for traceability
- Follow Process Indicators
- Autonomous System with a log of the last 500 process alarms

STANDARD INTERFACE LCD :

Switchover Screen

SWOVR->MOLD		
PRESS1	ON	220.0 bar
PRESS2		220.0 bar
EANA3		
EANA4		
MAC		

File Management Screen

Test3

File	: Test2
Date	: 10/10/2013
Hour	: 09:23:16
Author	: BRY
Mould Refer:	1234
Part Refer	: 5678
Comments	:

NEW SAVE LOAD DELETE

Input hold signal
Input dosing signal
Alarm input

Acquisition Screen

156 mm	Pressure : 105.2 bar
3.06 s	
CONFIG	MEASU MESAana NEXT

EASY-VIEW SOFTWARE (OPTION) :

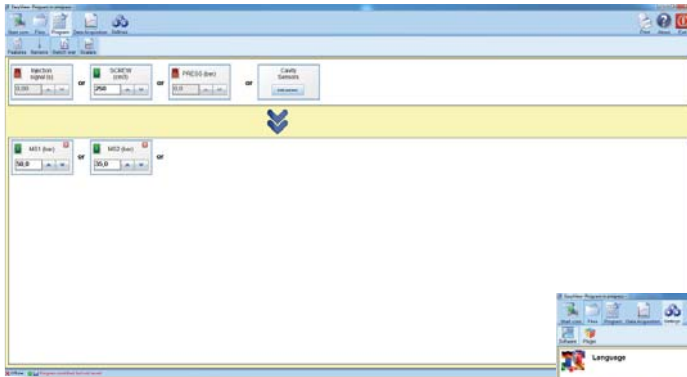
Acquisition Screen

Indicators Screen

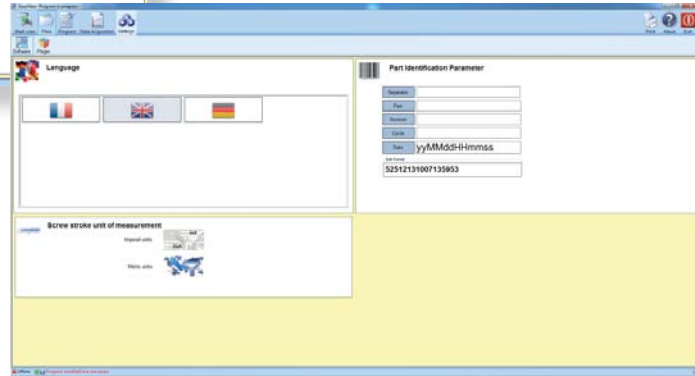
Indicator	Value	Unit	Min	Max	Alarm
Minimum value first stage phase	0		0	1000	
Maximum value first stage phase	0		0	1000	
Integral first stage phase	0		0	1000	
Minimum value holding phase	0		0	1000	
Maximum value holding phase	0		0	1000	
Integral holding phase	0		0	1000	
Hold rejection	0		0	1000	
Maximum value rejection phase	0		0	1000	
Integral rejection phase	0		0	1000	
First bar signal value	0		0	1000	
Holding signal value	0		0	1000	
End of holding signal value	0		0	1000	
Minimum value first stage phase	0		0	1000	
Maximum value first stage phase	0		0	1000	
Integral first stage phase	0		0	1000	

Calibration Screen

ID	Name	Unit	Min	Max	Alarm
1	MEASU	bar	0	100	10000
2	PRESS1	bar	0	0	100
3	M01	bar	0	0	100
4	M02	bar	0	0	100
5	M03	bar	0	0	100
6	M04	bar	0	0	100
7	M05	bar	0	0	100
8	M06	bar	0	0	100
9	Signal input		0	0	1000
10	Holding input		0	0	1000
11	Charge input		0	0	1000
12	ET001		0	0	1000



Switchover Screen



Settings Screen

- Easy-PSP is fully configured
calibration of sensors, switchover, choice of indicators,...)
- Create saved sessions
- Saving system data in a database
- Save data in XML files
- View curves by superposing data
- Indicator Analysis calculated over several cycles
- Manage reference cycles

SISE ALSO OFFERS :

- ✓ Consultation to better define your needs and find a solution
- ✓ A complete line of mold sensors (direct or indirect), with their conditioners/amplifiers
- ✓ Machine sensors in complement to existing signals, (measure screw position, injection pressure,...)
- ✓ Assistance with installation and training in France and around the world !

